
OPTIONAL SERVICE BULLETIN NO. DAC1-33-08 REV. 0

I TECHNICAL DETAILS

I.1 Category

Optional.

I.2 Airplanes Affected

Type: DA 20-C1

Serial Numbers: C0744 and prior

I.3 Date of Effectivity

13 October 2022

I.4 Time of Compliance

At owner's discretion.

I.5 Subject

ATA code: 3340.

I.6 Reason

This service bulletin addresses the replacement of the current installed landing and taxi lights with the new LED landing light and taxi light assemblies onto the DA 20-C1 aircraft using Whelen's 71125 series LED recognition lights.

I.7 Concurrent Documents

None.

I.8 Approval

The technical information and instructions contained in this document are approved as part of MOD0349, which has been approved as part of the type design.

I.9 Accomplishments/Instructions

1. Remove the taxi and landing lights. Refer to AMM Chapter 33-40.
2. Drill the 4th holes for the floating anchor nuts (Item 5) as follows:

A. Locate the 4th holes. Refer to Figures 1 and 2.

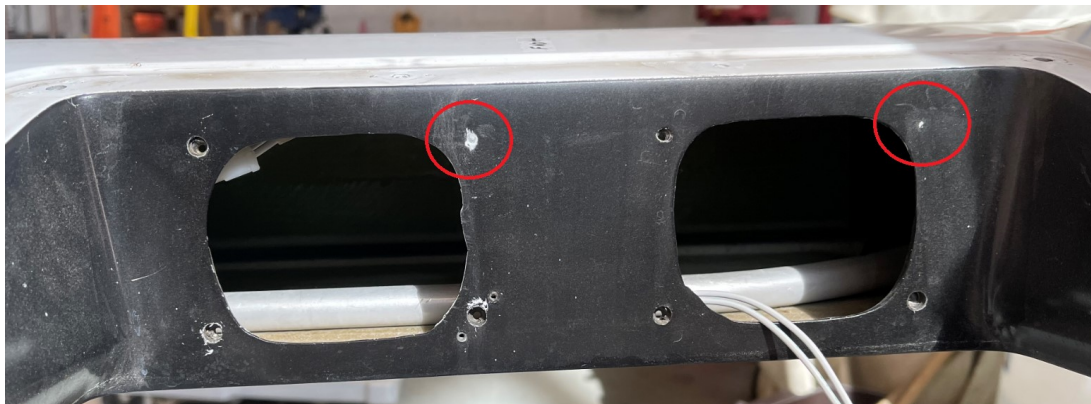


Figure 1. 4th holes.

B. Drill and countersink holes for the anchor nuts and rivets. Refer to Figure 2 for dimensions.

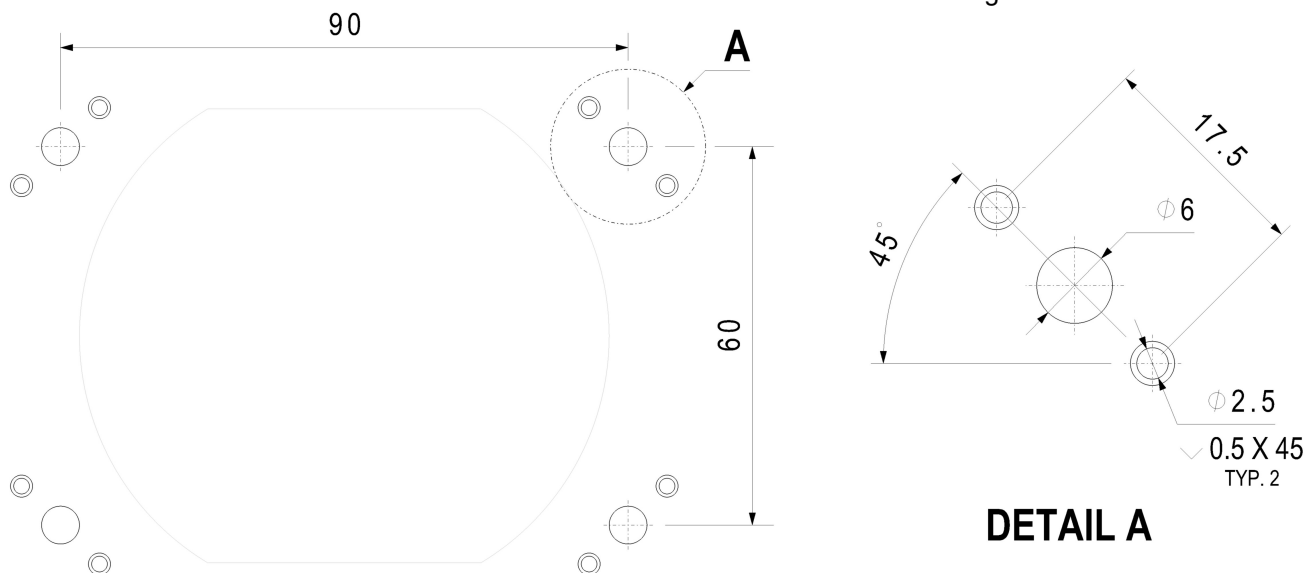


Figure 2. Hole dimensions.

NOTE: Make sure the area is clear of any wires before drilling.

3. Install anchor nuts (Item 5) with rivets (Item 6).
4. Install the landing light assy (Item 1) as follows:

A. Hold the landing light assy (Item 1) in position at the leading edge of the left wing and connect the electrical connector P3340-10 to the wing electrical connector J3340-10. Refer to Figures 3 for location, and 4 for identification markings.

- B. Install the landing light assy (Item 1) using screws (Item 3) and washers (Item 4).
5. Install the taxi light assy (Item 2) as follows:
- A. Hold the taxi light assy (Item 2) in position at the leading edge of the left wing and connect the electrical connector P3340-11 to the wing electrical connector J3340-11. Refer to Figure 3 for location, and 4 for identification markings.
- B. Install the taxi light assy (Item 2) using screws (Item 3) and washers (Item 4).

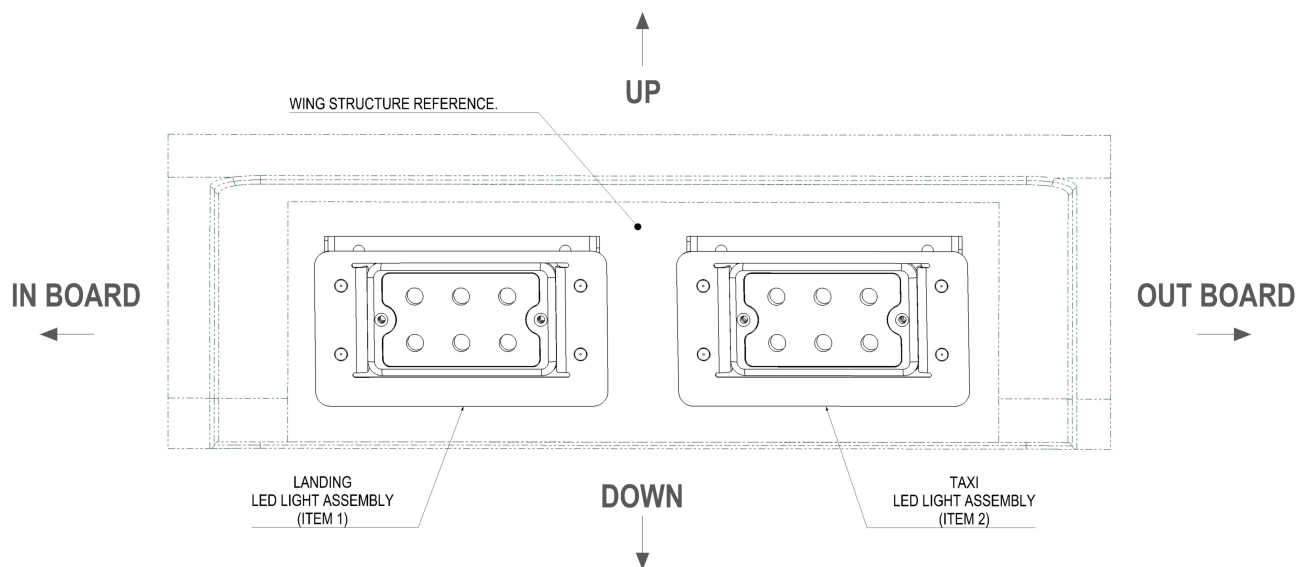


Figure 3. New LED lights location.

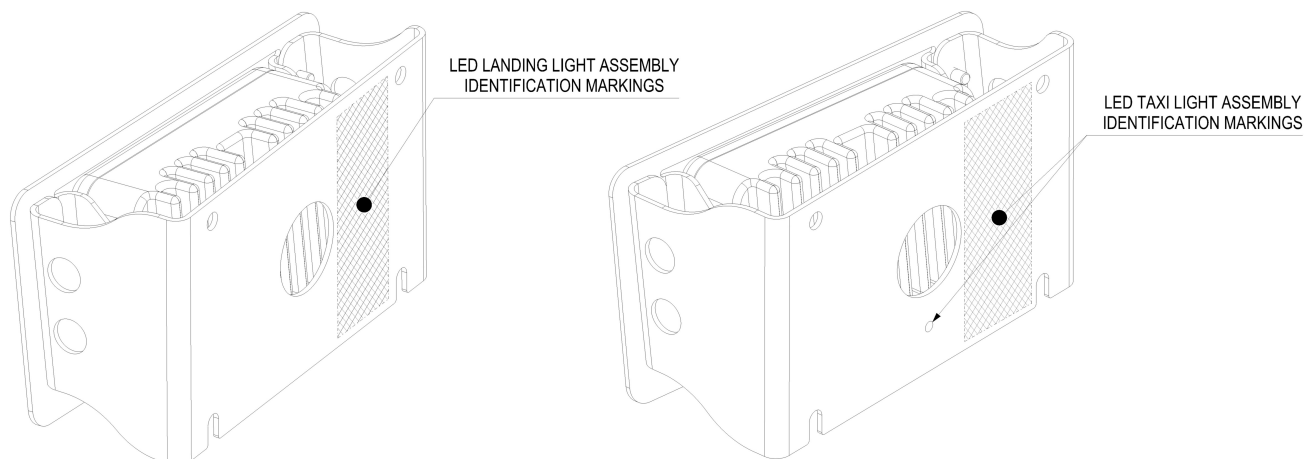


Figure 4. Landing and Taxi light assemblies identification marks.

6. Clean the working areas, and check for foreign objects.
7. Do an operational test of the taxi and landing lights. Refer to AMM Chapter 33-40.

Diamond Aircraft Industries
OPTIONAL SERVICE BULLETIN
Model DA 20-C1



8. Set the TAXI and LANDING switch to OFF.
9. Set the GEN/BAT switch to OFF.
10. Install the taxi/landing light cover to the wing.
11. Make all necessary entries in the logbooks.
12. Submit the execution report to Techpubs@diamondaircraft.com.

I.10 Mass (Weight) and CG

Make the following adjustments to weight and balance.

Items removed:

Item	Weight lbs (kg)
Light (P/N 01-0770346-00) 2x	-0.13 (-0.06) Each

Items installed:

Item	Weight lbs (kg)
LED Landing Light Assy (P/N 22-3344-50-00)	+0.57 (+0.26)
LED Taxi Light Assy (P/N 22-3344-51-00)	+0.57 (+0.26)

I.11 Electrical Load Data

Items removed:

Item	Load (A)
Light (P/N 01-0770346-00) 2x	-2.5 Each

Items installed:

Item	Load (A)
LED Landing Light Assy (P/N 22-3344-50-00)	+0.9
LED Taxi Light Assy (P/N 22-3344-51-00)	+0.9

II PLANNING INFORMATION

II.1 Material and Availability

Item	Quantity	Part Number	Description
1	1	22-3344-50-00	LED landing light assy
2	1	22-3344-51-00	LED taxi light assy
3	8	NAS1802-06-10	Screw, hex head
4	8	NAS1149CN416R	Washer, flat
5	2	NAS686-A06	Nut, floating, anchor
6	4	CCR244SS03-05	Rivet, blind

II.2 Special Tools

None.

II.3 Labour Effort

Approximately 2 hours will be required to accomplish this service bulletin.

This estimate is for direct labor performed by a technician, and it does not include setup, planning, familiarization, cure time, part fabrication, or tool acquisition.

II.4 Credit

None.

II.5 Reference Documents

DA 20-C1 Aircraft Maintenance Manual Doc. No. DA201-C1, latest effective issue.

III REMARKS

1. All work must be done by a certified aircraft service station or a certified aircraft maintenance mechanic.
2. All work, in particular which is not especially described in this service bulletin, must be done in accordance with the referenced maintenance manual.
3. Completion of all work must be recorded in the logbook.
4. In case of doubt, contact Diamond Aircraft Industries Inc.

To obtain satisfactory results, procedures specified in this service bulletin must be accomplished in accordance with accepted methods and current government regulations. Diamond Aircraft cannot be responsible for the quality of work performed in accomplishing the requirements of this service bulletin. Diamond Aircraft reserves the right to void continued warranty coverage in the area affected by this service bulletin if it is not incorporated.

If you no longer own the aircraft to which this service bulletin applies, please forward it to the current owner, and send the name of the current owner to Diamond Aircraft at the address below.

Diamond Aircraft Industries Inc.
1560 Crumlin Sideroad, London, Ontario, Canada
N5V 1S2

Customer Support:
Phone: (519) 457-4041, Fax: (519) 457-4045
E-mail: support-canada@diamondaircraft.com

Technical Publications:
E-mail: Techpubs@diamondaircraft.com

**EXECUTION REPORT TO
SERVICE BULLETIN
DAC1-33-08 REV. 0**

AIRPLANE DATA

Airplane serial number _____
Airplane registration _____
Airplane operator _____
Hours of operation of airplane (TSN) _____
Typical operation of airplane private, club, training, other: _____

MAINTENANCE DATA

Date of maintenance _____
Maintenance carried out by _____
During scheduled inspection? Yes ☐ No ☐

Name Signature Date

Please e-mail the completed form to Techpubs@diamondaircraft.com.